

# Technical Specification

## Avidity Science GENO™ CL Series

### CLRW Water



The Geno™ CL series has been designed to change the approach to clinical analyser feedwater for diagnostics laboratories. It minimises spatial requirements, whilst reducing the risk of water outage; all in one sophisticated cabinet.

#### FEATURES & BENEFITS

##### KEY FEATURES

A range of flow rates in a 'one box' solution with a small footprint to match the requirement of any analyser system configuration

Unique two-stream RO/EDI cassette technology provides contingency, upgrade capability and minimises downtime

Simple operator interfaces through an Intuitive icon driven control via a high resolution 10" touch screen

CLSI-CLRW compliant water delivered by whisper-quiet pumps

Onboard maintenance tutorial videos

Low running costs

#### PRODUCT WATER QUALITY

PRODUCT WATER SPECS		GENO™ 50 CL	GENO™ 100 CL / CLD	GENO™ 150 CLD	GENO™ 200 CLD
Makeup Flowrate	L/hr	50	100	150	200
Inorganics	MΩ-cm at 25°C	>10	>10	>10	>10
Organics	TOC ppb	<30	<30	<30	<30
Bacteria	CFU/ml	<10	<10	<10	<10
Particles	at µm filter	0.2	0.2	0.2	0.2
Silica	mg/L	<0.05	<0.05	<0.05	<0.05
Delivery Flowrate	L/min @ 14psi	7.5	7.5	7.5	7.5

#### SYSTEM REQUIREMENTS

FEED WATER		GENO™ 50 CL & GENO™ 100 CL / CLD	GENO™ 150 CLD & GENO™ 200 CLD
Pressure	Bar	1 to 6	1 to 6
Flow	L/hr	190	380
Hardness as CaCO <sub>3</sub>	ppm	<20	<20
Temperature	°C	<25*	<25**
Conductivity***	µS/cm	10 to 2000	10 to 2000
Free Chlorine	ppm	<0.2*	<0.2**
Carbon Dioxide***	ppm	<30	<30
pH		4 to 10	4 to 10

\* Calculated at operation of 12 hours per day, filter change every 6 months

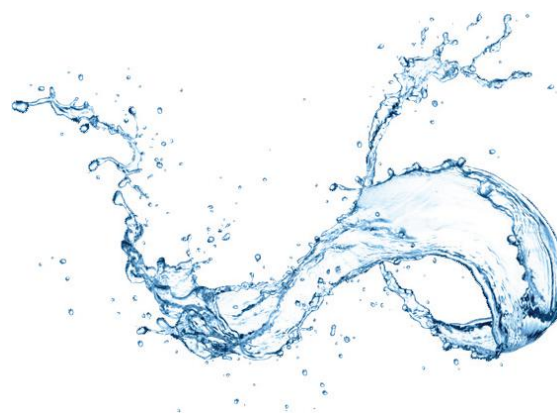
\*\* Calculated at operation of 12 hours per day, filter change every 3 months

\*\*\* FCE (Feed Conductivity Equivalent) means conductivity + (ppm CO<sub>2</sub> x 2,66) + (ppm SiO<sub>2</sub> x 1,94)

#### UNIT SPECIFICATIONS

##### ALL MODELS

Dimensions (HxWxD)	1852 x 750 x 600mm
Working Depth	800mm
Net Weight	182kg
Operating Weight	292kg
Maintenance Access	450 x 800mm
Power Supply	110 - 230V ~; 50/60Hz; 1160W (max)



**Avidity Science Ltd**  
Unit D4 Drakes Park, Long Crendon, Bucks, HP18 9BA  
+44 (0)1844 201142 | AvidityScience.com

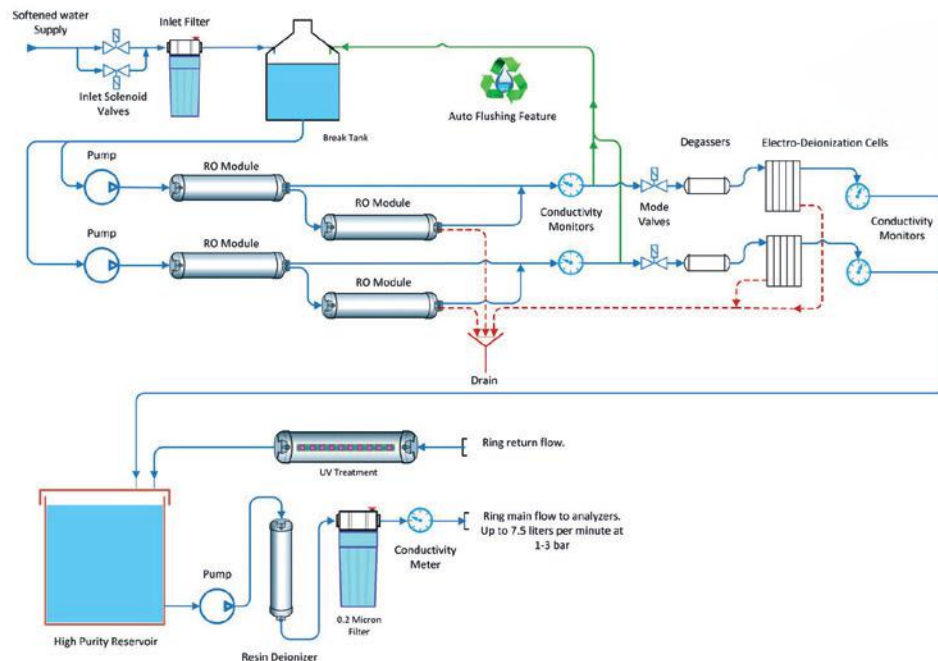
# Technical Specification

## Avidity Science GENO™ CL Series

### CLRW Water



#### GENO™ CL FLOW CHART



#### UTILITIES & SERVICES

##### REQUIREMENTS

Feed Water Connection	3/4" Male
Drainage (normal)	3.3 L/m
Drainage (overflow)	10 L/m

#### CONSUMABLES & ACCESSORIES

PART NUMBER	DESCRIPTION	TYPICAL ANNUAL REQUIREMENT
TC003	UV Lamp	12 Months
TC005	Air Vent Filter	12 Months
TC041	EDI Cell 50 - 100L/h	2 - 3 Years
TC042	RO Membrane	2 - 3 Years
TC043	20" Carbon	3 Months
TC044	DI Cartridge	3 Months
TC045	0.2uM Clamp	6 Months
TC046	Degasser Air Filter	12 Months
TC047	Degasser Membrane	2 - 3 Years

#### OPTIONS

##### COMMUNICATION PORTS

Secure remote access & logging ethernet

Building management services 3 pole connection for global fault  
(Common, Normally Open & Normally Closed)



保吉生化學股份有限公司  
BIO-CHECK LABORATORIES LTD.

台北 | (02) 2246- 7799  
台中 | (04) 2371- 9412  
台南 | (06) 238- 9287  
高雄 | (07) 222- 9968



[www.BIO-CHECKLIFE.com.tw](http://www.BIO-CHECKLIFE.com.tw)